



# INDOFINE Chemical Company, Inc.

121 Stryker Lane, Bldg. 30, Suite 1 • Hillsborough, NJ 08844 • U.S.A.

Phone: (908) 359-6778 • FAX: (908) 359-1179

website: [www.indofinechemical.com](http://www.indofinechemical.com)

e-mail: [chemical@indofinechemical.com](mailto:chemical@indofinechemical.com)

## CERTIFICATE OF ANALYSIS

Catalog number: 06-032

Product name: **SALICIN**  
(Salicylalcohol glucoside)

Cas Number: [138-52-3]

Lot Number: 1711885

Chemical Formula: C<sub>13</sub>H<sub>18</sub>O<sub>7</sub>

Molecular Weight: 286.28

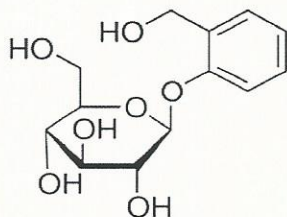
Appearance: White Powder

Loss on drying: 1.36%

Specific Rotation: -62.59°

Storage: Store in a cool, dry place

Purity(HPLC): 99.52%



# ICG **INDOFINE Chemical Company, Inc.**

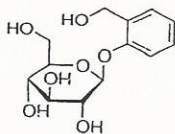
121 Stryker Lane, Bldg. 30, Suite 1 • Hillsborough, NJ 08844 • U.S.A.

Phone: (908) 359-6778 • FAX: (908) 359-1179

website: [www.indofinechemical.com](http://www.indofinechemical.com)

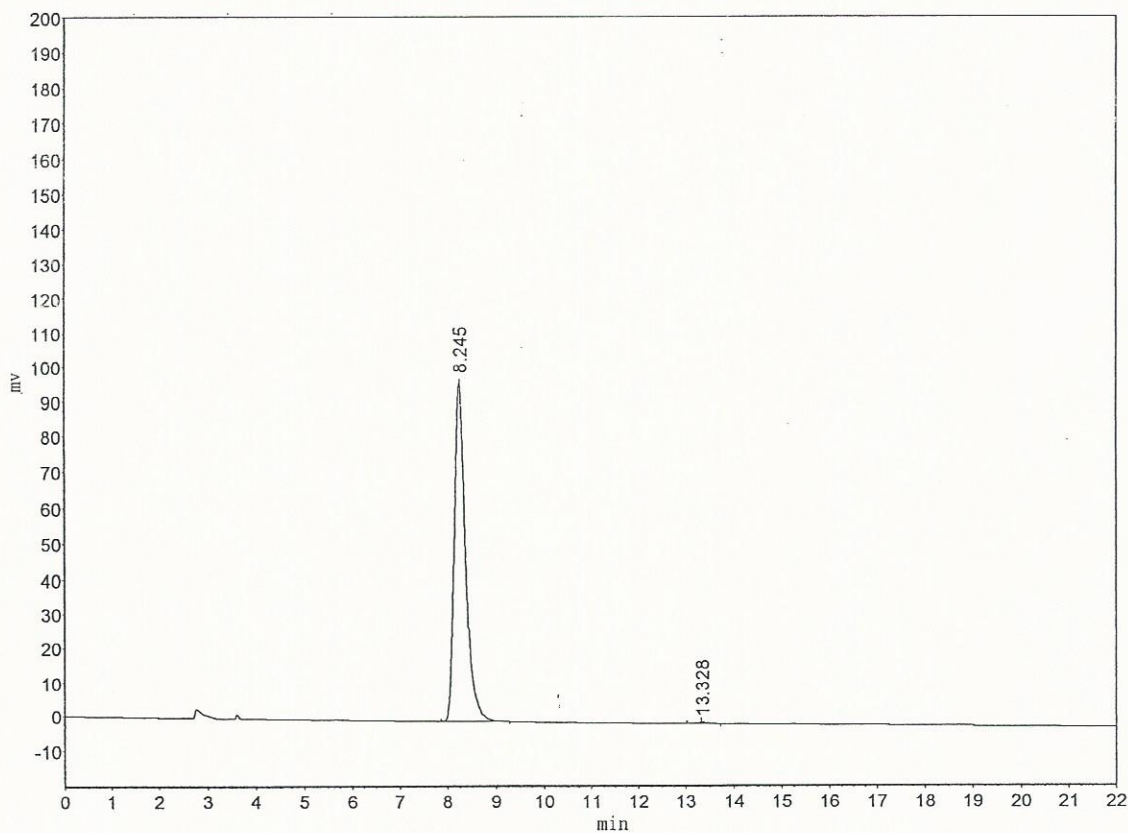
e-mail: [chemical@indofinechemical.com](mailto:chemical@indofinechemical.com)

## HPLC ANALYSIS



Catalog No.: 06-032  
Product Name: Salicin  
Lot No.: 1711885

Mobile phase : Acetonitrile - (0.03% $H_3PO_4$ )Water 10:90  
Flow rate : 1.0 ml/min  
Wavelength : 269 nm  
Temperature : 25 °C

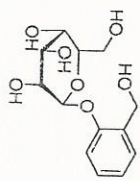


Peak Table

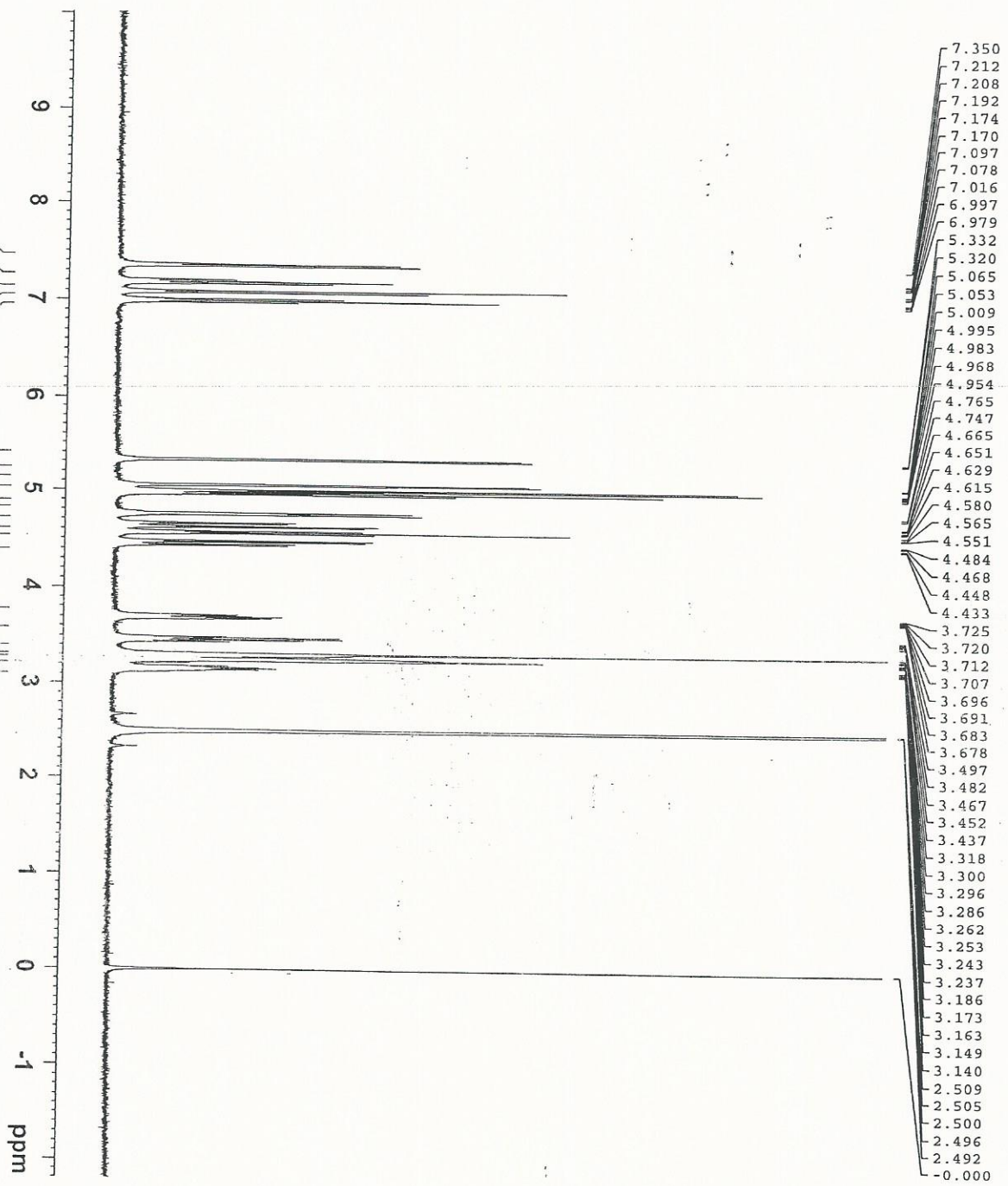
Peak#	RT	Height	Area	%Area
1	8.245	96577.320	1602504.375	99.5287
2	13.328	388.444	7587.846	0.4713
		96965.765	1610092.221	100.0000



**INDOFINE Chemical Company, Inc.**  
 121 STRYKER LANE  
 BLDG. 30, SUITE 1  
 HILLSBOROUGH, NJ 08844



Catalog No.: 06-032  
 Product Name: Salicin  
 Lot No.: 1711885



Current Data Parameters  
 NAME SNICIN-H1-DMSO  
 EXPNO 20  
 PROCNO 1

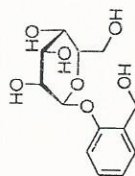
F2 - Acquisition Parameters  
 Date\_ 20171106  
 Time 22.22  
 INSTRUM spect  
 PROBD 5 mm PABBO  
 PULPROG zg30  
 TD 65336  
 SOLVENT DMSO  
 NS 8  
 DS 2  
 SWH 8223.685 Hz  
 FIDRES 0.125483 Hz  
 AQ 3.984587 sec  
 RG 409.111  
 DW 60.600 usec  
 DE 8.000 usec  
 TE 298.5 K  
 D1 1.00000000 sec  
 TDO 1

\*\*\*\*\* CHANNEL f1 \*\*\*\*\*  
 NUC1 1H  
 P1 12.000 usec  
 PLW1 15.8489200  
 SFO1 400.1532013 MHz

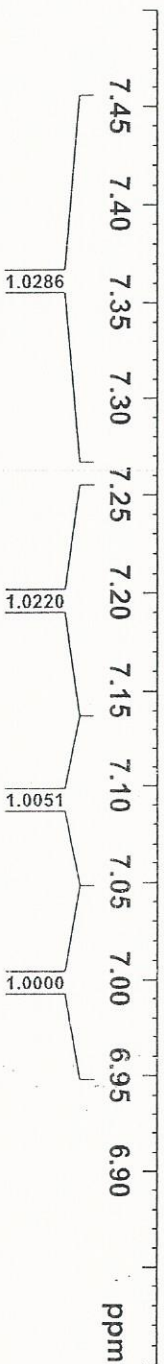
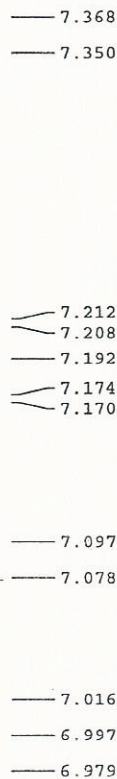
F2 - Processing parameters  
 SI 65536  
 SF 400.1600024 MHz  
 MDW 0  
 SSB 0  
 GB 0  
 PC 1.00



**INDOFINE Chemical Company, Inc.**  
 121 STRYKER LANE  
 BLDG. 30, SUITE 1  
 HILLSBOROUGH, NJ 08844



Catalog No.: 06-032  
 Product Name: Salicin  
 Lot No.: 1711885



Current Data Parameters  
 NAME SALICIN-HI-DMSO  
 EXPNO 20  
 PROCNO 1

F2 - Acquisition Parameters  
 Date\_ 20171106  
 Time 22.22  
 FIDRES 0.125483 Hz  
 AQ 3.394537 sec  
 SFO1 400.1632013 MHz  
 PULPROG zg30  
 TD 65536  
 SOLVENT DMSO  
 NS 8  
 DS 2

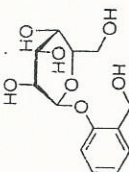
SWH 8223.685 Hz  
 FIDRES 0.125483 Hz  
 AQ 3.394537 sec  
 SFO1 400.1632013 MHz  
 PULPROG zg30  
 TD 65536  
 SOLVENT DMSO  
 NS 8  
 DS 2

\*\*\*\*\* CHANNEL f1 \*\*\*\*\*  
 NUCL1 13 1H  
 P1M1 15.8485098 u sec  
 SFO1 400.1632013 MHz  
 F2 - Processing parameters  
 SI 65536  
 SF 400.160024 MHz  
 MDW 0  
 SSB 0  
 GB 0  
 PC 1.00





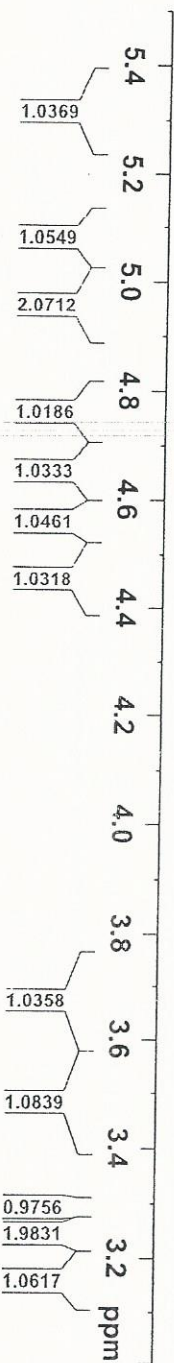
INDOFINE Chemical Company, Inc.  
 121 STRYKER LANE  
 BLDG. 30, SUITE 1  
 HILLSBOROUGH, NJ 08844



Catalog No.: 06-032  
 Product Name: Salicin  
 Lot No.: 1711885

5.332  
 5.320  
 5.065  
 5.053  
 5.035  
 5.009  
 4.995  
 4.983  
 4.968  
 4.954  
 4.781  
 4.765  
 4.747  
 4.732  
 4.665  
 4.651  
 4.629  
 4.615  
 4.580  
 4.565  
 4.551  
 4.484  
 4.468  
 4.448  
 4.433

3.725  
 3.720  
 3.712  
 3.707  
 3.696  
 3.691  
 3.683  
 3.678  
 3.497  
 3.482  
 3.467  
 3.452  
 3.437  
 3.318  
 3.300  
 3.296  
 3.286  
 3.262  
 3.253  
 3.243  
 3.237  
 3.221  
 3.186  
 3.173



Current Data Parameters  
 NAME SALICIN-H1-DMSO  
 RNAME 20  
 PROCN 1

F2 - Acquisition Parameters  
 Date\_ 20171106  
 Time\_ 22.22  
 INSTRUM spect  
 PROBD 5 mm PABBO BB/  
 PULPROG zg30  
 SOLVENT DMSO  
 NS 2  
 DS 823.685 Hz  
 SMH 0.125483 Hz  
 FIDRES 3.9846387 sec  
 AQ 197.41  
 RG 60.800 usec  
 DM 8.00 usec  
 TE 298.5 K  
 D1 1.00000000 sec  
 TDO 1

\*\*\*\*\* CHANNEL f1 \*\*\*\*\*  
 NUCL 1H  
 P1 12.80 usec  
 PLW 15.8489998 W  
 SF01 400.1612013 MHz

F2 - Processing Parameters  
 SI 653  
 SF 400.160024 MHz  
 MDW 0 EM  
 SSB 0  
 LB 0 0.30 Hz  
 GB 0  
 PC 1.00